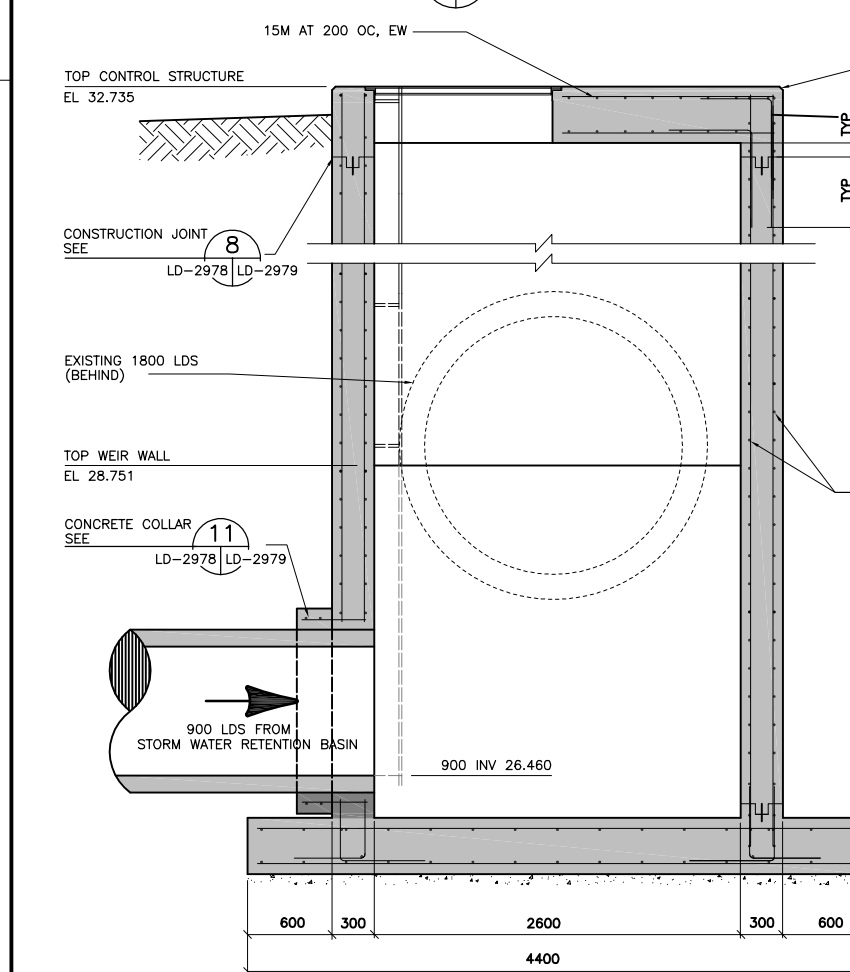
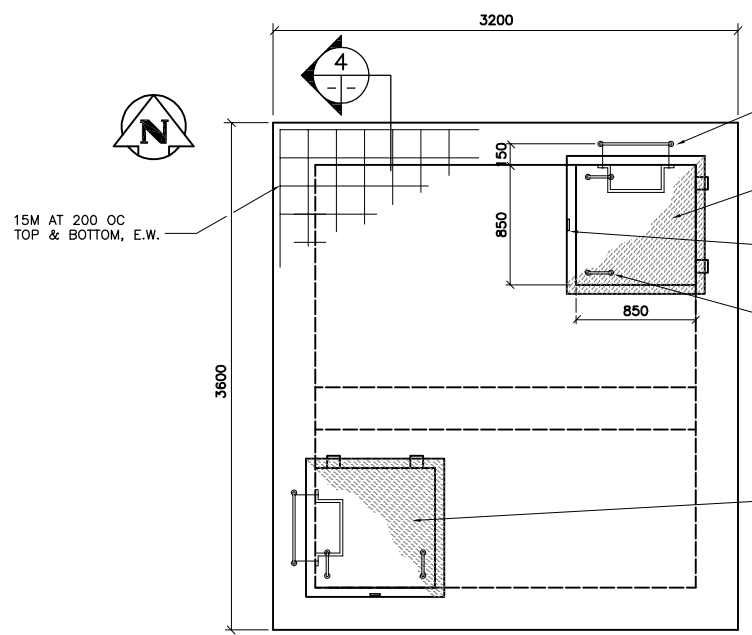


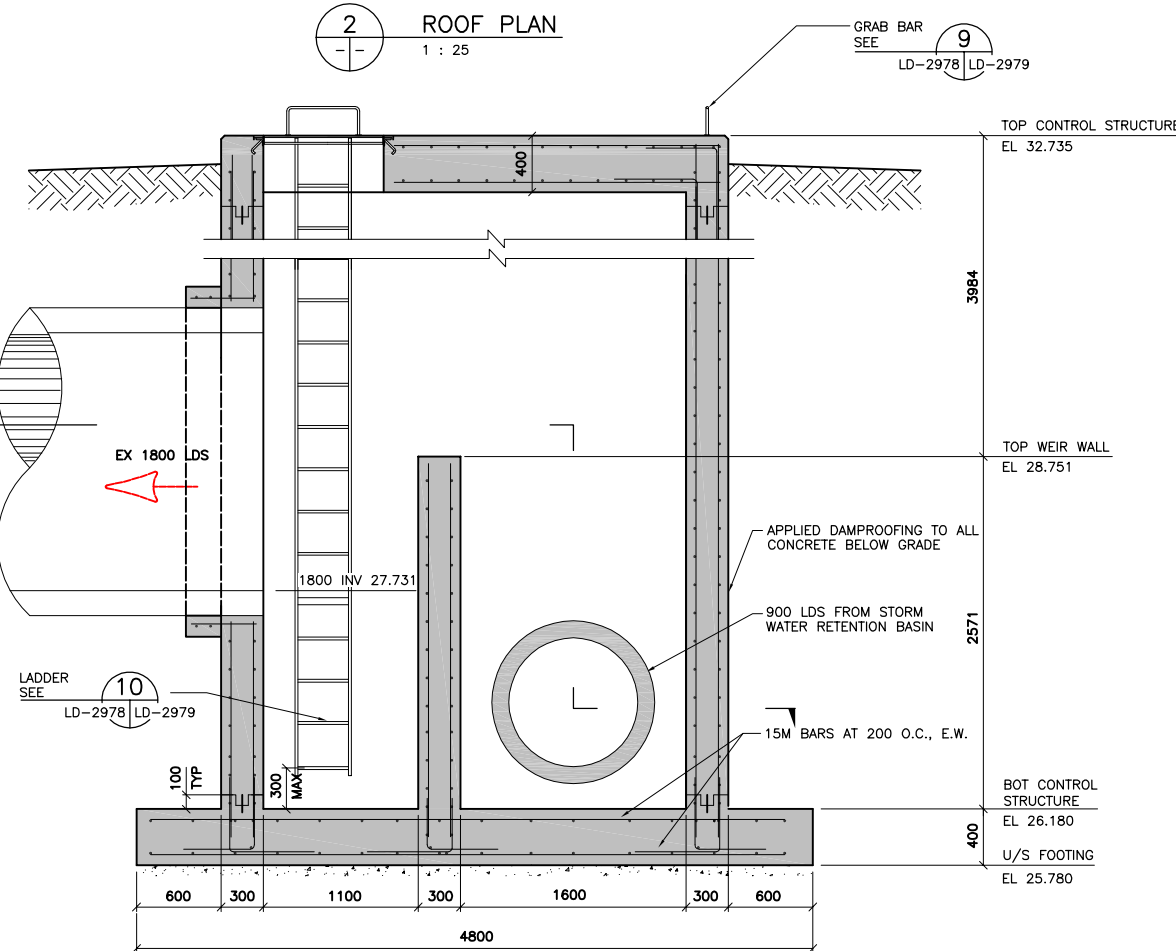
1 PLAN SECTION  
1 : 25



3 SECTION (LOOKING NORTH)  
1 : 25



2 ROOF PLAN  
1 : 25



4 SECTION (LOOKING WEST)  
1 : 25

- CONCRETE:**
- CONCRETE MATERIALS AND WORKMANSHIP CONFORMS TO CSA-A23.1-00, INCLUDING COLD WEATHER REQUIREMENTS WHEN THE MEAN DAILY TEMPERATURE FALL BELOW 5°C.
  - CONCRETE 28 DAY COMPRESSIVE STRENGTH MIN. 30 MPa. CEMENT TYPE 50. NOMINAL AGGREGATE SIZE 20mm.
  - LEAN MIX WORKING BASE CONCRETE IN ACCORDANCE WITH SPECIFICATIONS.

- REINFORCING STEEL:**
- REINFORCING STEEL CONFORMS TO CSA G30.18-M92, GRADE 400W.
  - CLEAR COVER FOR REINFORCING STEEL IN CONCRETE:
    - CONCRETE EXPOSED TO EARTH AND INSIDE OF CONTROL STRUCTURE: 75mm
    - ALL OTHER CONCRETE: 50mm

- FOUNDATION:**
- THE CONTROL STRUCTURE IS DESIGNED ON THE BASIS OF SOIL/PRESSURES DUE TO A SURROUNDING FIRM TO STIFF CLAY.

- ALUMINIUM:**
- ALL ALUMINIUM WORK CONFORMS TO CSA/CAN3-S157.
  - ALUMINIUM SECTIONS CONFORM TO ALUMINIUM ALLOY SPECIFICATION REFERENCE AS FOLLOWS:
    - PLATES 6061-T651
    - SHEETS 6061-T6
    - EXTRUSIONS 6061-T6
  - ALL ALUMINIUM IN CONTACT WITH CONCRETE TO BE COATED WITH AN ALKALI RESISTANT BITUMINOUS PAINT.
  - STAINLESS STEEL GRADE 316.

- STRUCTURAL STEEL:**
- STRUCTURAL STEEL CONFORMS TO G40.21, GRADE 300W OR 350W.
  - DETAILING, FABRICATION, AND ERECTION CONFORMS TO CSA S16.1.
  - FOR BOLTED CONNECTIONS USED GRADE A325 BOLTS UNLESS NOTED OTHERWISE.
  - WELDING CONFORMS TO CSA W59.1. MIN. 6mm FILLET WELD, UNLESS OTHERWISE NOTED.
  - ALL STEEL COMPONENTS ARE HOT DIP GALVANIZED TO CSA G164 WITH MIN NET RETENTION OF 600g/m<sup>2</sup>

RECORD DRAWING	
DATE	Y/M/D 10.09.01
DRAFTED BY	G.E.L.
FIELD INFO BY	B.B.
CHECKED BY	G.M.D./S.E.H.

DATE OF SUBSTANTIAL PERFORMANCE:  
MARCH 30, 2004  
CONSTRUCTION PERIOD:  
FEBRUARY 2004 TO MARCH 2004

CONTRACTOR:  
NELSON RIVER CONSTRUCTION

**APEGM**  
Certificate of Authorization  
Wardrop Engineering Inc.  
No. 195 Expiry: April 30, 2011

DESIGNED BY DNB		CHECKED BY		ORIGINAL DRAWING REVISION "01" SEALED BY D.N. BURMEY P. ENG 2004.01.26
DRAWN BY GMD		APPROVED BY		
HOR. SCALE: 1 : 25		RELEASED FOR CONSTRUCTION		CONSULTANT DRAWING NO. 0312940900-DWG-C0005-02
VERTICAL:		DATE		
NO.	REVISIONS	DATE	BY	
2	REVISED TO RECORD DRAWING	10.09.01	GWC	
1	ISSUED FOR CONSTRUCTION	04.01.26	DNB	
0	ISSUED FOR TENDER	03.12.09	SH	
-	ISSUED FOR APPROVAL	03.12.09	SH	

**THE CITY OF WINNIPEG**  
PLANNING, PROPERTY & DEVELOPMENT DEPARTMENT

**FAIRFIELD PARK LOCAL IMPROVEMENT DISTRICT**  
STORMWATER RETENTION BASIN EXCAVATION, OUTFALLS & ASSOCIATED WORKS

CITY DRAWING NUMBER  
LD-2978  
SHEET 5 OF 7

STORMWATER RETENTION BASIN OUTLET CONTROL STRUCTURE PLANS, SECTIONS AND NOTES

C0005